



YOU MAY CONTACT ANY OF OUR SALES PEOPLE AT THE FOLLOWING NUMBERS:

MAIN STREET OFFICE.....547-3441

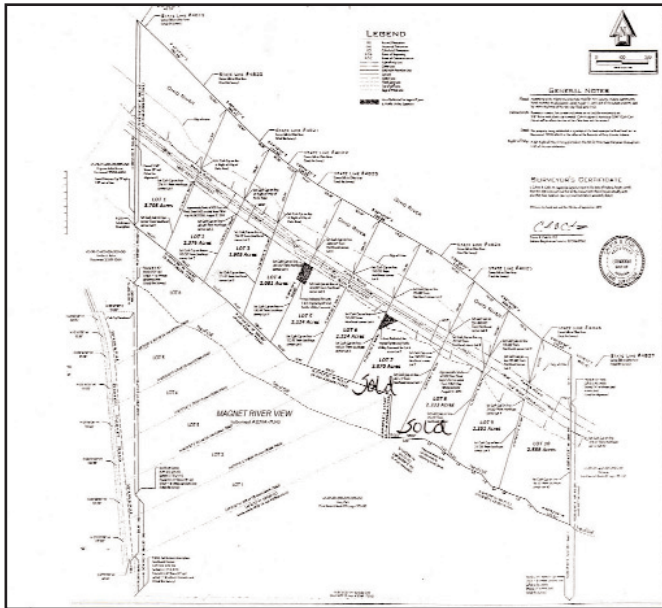
Goldie Hollinden.....	812-547-4498	Kelly Hollinden.....	812-719-1349
Tony Hollinden.....	812-608-0550	Tony Collignon.....	812-547-8903
Joyce Stath.....	812-719-1230	Betty Cash.....	812-547-7785
Marti Tichenor.....	502-544-7552	Darryl Irvin.....	812-843-5833
Rick Newton.....	812-719-2189	Rita (Esarey) Marsili.....	812-549-5071
		Susan Ubelhor.....	812-608-0737

GO TO WEB SITE, CLICK ON PICTURE, TOUR INTERIOR OF HOMES

ANTHONY J. HOLLINDEN - BROKER

www.hollindenre.com

LOTS, ACREAGE, AND CABINS



8 beautiful lots adjoining Ohio River! Spots for cabin or home sites. All utilities at properties including fiber optic for phone & internet, paved road. One of a kind sites with gorgeous view of the River! Magnet Narrows Development, Magnet, IN. \$69,000 each. #310

- NEW LISTING! Perfect hunting with 12 acres!** Borders Nat'l Forest, wooded, great for home or cabin. Recently surveyed. 17350 Old SR 37, Leopold. \$44,500. #330
- NEW LISTING! Looking for weekend getaway - here it is!** 4 blocks from Ohio River & boat ramp, shelter house w/small kit, bath and small house to vacation! 200 S Main, Alton, IN. \$43,500. #331
- NEW LISTING! Great camping lot,** 4 blocks from Ohio River. Shelter ideal for camper or boat, small concrete area for entertaining. Lot is flat for easy access. 190 S Main, Alton, IN. \$21,500. #332
- 2 CITY BLOCKS IN TELL CITY!** Wooded, approx 5 acres, city utilities. Call for details. Corner of 19th & Pestalozzi. \$80,000. #312
- 33 AC, GREAT VALLEY VIEW & LOCATION.** Beautiful bldg sites on Hwy 145 north of St. Mark's. 7 ac open, elec & city water available. Small pond & rest of land is wooded. Hwy 145. \$110,000. #314
- 1.08 ACRE ON BIG DEER CREEK!** Access to Ohio River, great cabin/camp right on the water, wooded, w/elec & water available. Call for details. SR 66, Cannelton. \$29,900. #305
- 2 tracks on Deer Creek,** On Hwy 66, electric & boat ramp on 1 track. Call for details & location. \$39,500 & \$30,000. #325
- 2 ac close to Tell City!** Ideal bldg site or storage area with lg 2 car garage w/storage, utilities available. On old Hwy 237. Reduced to \$28,000. #313
- 10x24 log cabin on 2 ac.** Covered porch, furnished, heat & a/c. Woods, fire pit, metal garage & carport. More acreage available. 5761 S. SR 66, Leavenworth. Reduced \$49,000. #318
- 3200 sq ft of Commercial space.** Office space, plenty of storage for equipment, lg parking area. 6886 St Rd 237. \$99,000. #608
- Commercial area off Hwy 237.** 1800 sq ft in two bldgs with 1.24 acres with parking area. SR 237. \$24,500. #609
- 4 AC LOT AT VISTA RIDGE** near Derby, has great bldg site & beautiful river view, all utilities. \$29,000. #306
- ROCKY POINT, WOODED BLDG SITE,** 2.2 ac, lot #21 with water access, great seclusion with all utilities. SR 66, Rocky Point. Reduced to \$25,000. #311
- 3.29 AC,** beautiful bldg site, high above cliffs along Ohio River. Water, elec available, close to Gov't land, dazzling views on amazing site. Near Magnet. \$89,000. #307
- NEW LISTING! 3 DIFFERENT SITES** - \$5,000 each! One clear w/small storage bldg, other 2 have older homes to remodel or tear down. Call for locations & details. #319
- 2 LOTS FOR SALE, #16 & #17** near Rocky Point. Fishing, boating or camping nearby on the Ohio River! Private drive to water's edge of the River inlet. Water & electric, secluded. Reduced to \$27,000 each. #315
- 19 AC COMMERCIAL SITE.** Intersection of Hwy 37 & Hwy 237. Prime location! Tell City. \$345,000 #604
- OVERLOOKING OHIO RIVER** featuring paved road, utilities, awesome view of the river & next to Magnet! \$74,000. #301
- One of a kind!** 11.3 ac near Rocky Point & Ohio River, beautiful bldg site overlooking your own private vineyards & lakes. All utilities, stocked lakes, vineyard has Chambourcin vine, red grapes & Fredoni vines. Special property! 7745 E SR 66, Cannelton. Reduced to \$175,000. #303

CRAWFORD COUNTY

- Great hunting!** 80 secluded ac, NE of I-64 at Carefree, IN. Paradise w/pine, cedar & hwdwd trees, creek runs thru property & established ATV trails. Borders Gov't ground, secluded. Call for details. Shafer Ridge Rd. \$199,000. #333
- 56 ac south of Carefree.** 39 tillable acres, remainder woods. Small cabin surrounded in woods. 10x24 cabin has carport & metal garage. Off I-64 at exit 92. Call for details. Reduced to \$240,000. Also available cabin + 2 acres, \$49,000. #328